

OFDP Updates since 4.7.2.5

From DevWiki

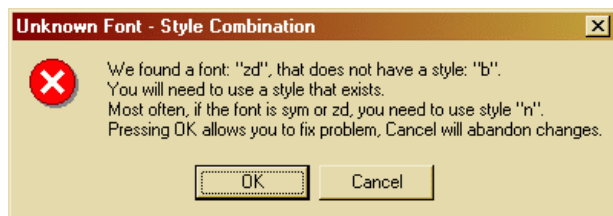
Problem Resolutions and Enhancements

- **ArrowRight460 (ZapfDingbat \460^)** did not display correctly
 - 20:56, 24 February 2009 (UTC)
 - *Problem:* Display of \460 character had the incorrect arrow display in OFDP. The PDF output and the stored file were correct.
 - *Diagnosis:* The reverse lookup for the extended special character number (>128) was modified in v4.7.2.5. Since the output was still correct the character was not detected.
 - *Resolution:* The reverse lookup was fixed and all characters from zd and Times font were verified.

- **OFDP crash during synchronization of long question**
 - 20:56, 24 February 2009 (UTC)
 - *Problem:* A question that was made up to test all variations of special characters in a question. The question would cause a hard crash of OFDP.
 - *Diagnosis:* The pre-scan of number of lines of storage required was inaccurate.
 - *Resolution:* Added a reallocation of lines if pre-scan is incorrect.

- **PDF File not Loading Dependent Data**
 - 20:55, 19 February 2009 (UTC)
 - *Problem:* Loading of dependent data would fail in Acrobat Reader 8. It would work in Reader 6 & 7.
 - *Diagnosis:* It finally showed up in the logs in the query folder of web server. The request, which always is packed into a single variable *PDFQueryDataParams*, was truncated. Truncated to exactly 50 characters.
 - *Resolution:* The cause of the problem is that the *PDFQueryDataParams* field was *limited* to 50 characters. A prior version of OFDP had made it so that the field did not have to be part of the .elf file, but would be added just before generating the PDF and removed right after that. This auto created field did not set the character count to be unlimited, hence the problem. Old files that have the field as simply hidden all the time may not be affected.

- **Bail out of Text Edit Errors**
 - 21:21, 19 February 2009 (UTC)
 - *Problem:* When you get an error in a text edit, it had to be fixed in order to move on.
 - *Diagnosis:* The message box was modified to have a OK/Cancel options.
 - *Resolution:* The prior edit always restarted the edit for any error. Now, if cancel is selected the entire text edit is ignored.



- **Grouped Text Vertical Justification**
 - 21:11, 23 February 2009 (UTC)
 - *Problem:* Some files, when multiple text items were grouped, did not behave well when using **Modify -> Adjust Text Leading**.
 - *Diagnosis:* The reason for the failure was the combination of paragraphs using *Lead Before* for adjustment or using *Lead After* for adjustment.
 - *Resolution:* The process now takes the group and puts any *Lead After* into the following elements' *Lead Before* prior to starting the adjustment process. Then the modification of *Lead Before* for all of the elements performs consistently.

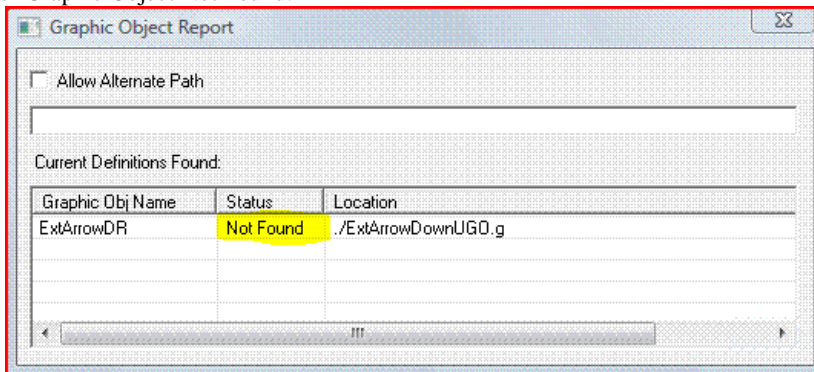
- **Advanced ELF Properties Dialog -- New Custom Info**
 - 21:25, 23 February 2009 (UTC)

- *Problem:* When using the Advanced Elf Properties dialog, (select elf, right click, **Advanced EForm Field Properties**), did not correctly handle adding a single section to *HTML Sections*. It would go in, but when saving the field, it would be lost.
- *Diagnosis:* Fixed how adding of completely new section was being processed so that no data is lost.
- *Resolution:* The display of the Tree view of the various sections has also been fixed.

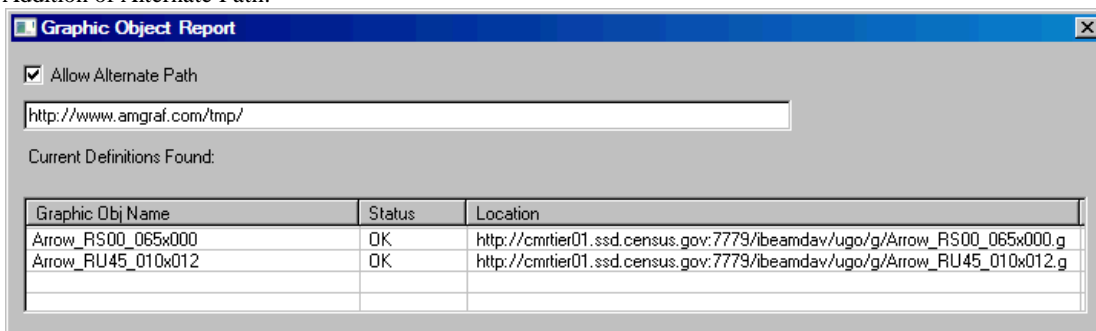
■ **Graphic Objects Alternate Path**

- 12:59, 24 February 2009 (UTC)
- *Problem:* Files with Graphic Objects (UGOs) when transferred from one location to another were not able to display the Graphic Objects because of differences in the accessible paths.
- *Diagnosis:* The Graphic Object loading already allowed for looking in the local directory for the Object if it was unavailable from the path.
- *Resolution:* A dialog was added to show what Graphic Objects are present in the file, which ones were found, and a way to specify one alternate path to go to check if the Object exists there. The dialog below is available from **Options -> Graphic Objects -> Show Current Graphic Objects**

■ Case of Graphic Object Not Found:



■ After Addition of Alternate Path:



■ **Enhanced EForm Field List**

- 15:32, 24 February 2009 (UTC)
- *Problem:* The EForm field list gave very little useful information about the current fields in the page. Its only value was being able to edit a field that was difficult to pick.
- *Diagnosis:* Make the EForm Field list user configurable to present the information relevant to the current form. Allow some of the common things changed to be directly edited from the list without going to properties dialog multiple times.

■ **Expanded EForm List Display.**

Field Name	InputQual	Format	Chars	Lines
altn	None		30	0
Autolnc	Read Only	Now	0	0
CancelBack	None		0	1
chargeto	None		36	0
ClearForm	None		0	1
cost	Read Only	###,###.00	0	1
delto	None		30	0
descrip	None		30	1
Division	None		50	1
itemnum	None		20	1
jobnum	None		30	0
qty	None		0	1
recsup	None		30	0
reqdate	None	Now	0	0
reqfrom	None		300	5
reqnum	None	Now	30	1

Options for List Display

<input type="checkbox"/> Type	<input type="checkbox"/> Tab Order
<input type="checkbox"/> Output Database	<input type="checkbox"/> Print Options
<input type="checkbox"/> Input Database	<input type="checkbox"/> Dimensions
<input checked="" type="checkbox"/> Input Format	<input type="checkbox"/> Security
<input type="checkbox"/> Qualifiers	<input type="checkbox"/> Group

Cancel OK

Below are the Column headings that are displayed for each of the options that are selected from the dialog above. In the list below any heading with (*) are fields that are editable in the list and (**) are fields that are modified via a select list of options. In order to edit, left click on the row, the row is highlighted, then left click on the column. If directly edited, an insert cursor will appear. If a select list appears, the entire field list is disabled and you must leave the select list via the tab key.

- **Type**
 - FldType (**)
- **Output Database**
 - OutputDB
 - OutputDBFld (*)
- **Input Database**
 - InputDB
 - InputDBFld (*)
 - DepField
- **Input Format**
 - InputQual (**)
 - Format (*)
 - Chars (*)
 - Lines (*)
- **Qualifiers**
 - FldQual
- **Tab Order**
 - Tab Order
- **Print Options**
 - Font (**)

- Size H (*)
- Size V (*)
- CM H (**)
- CM V (**)
- Color (*)

■ **Dimensions**

- HDim (*)
- VDim (*)
- HPos (*)
- VPos (*)
- Steps (*)

■ **Security**

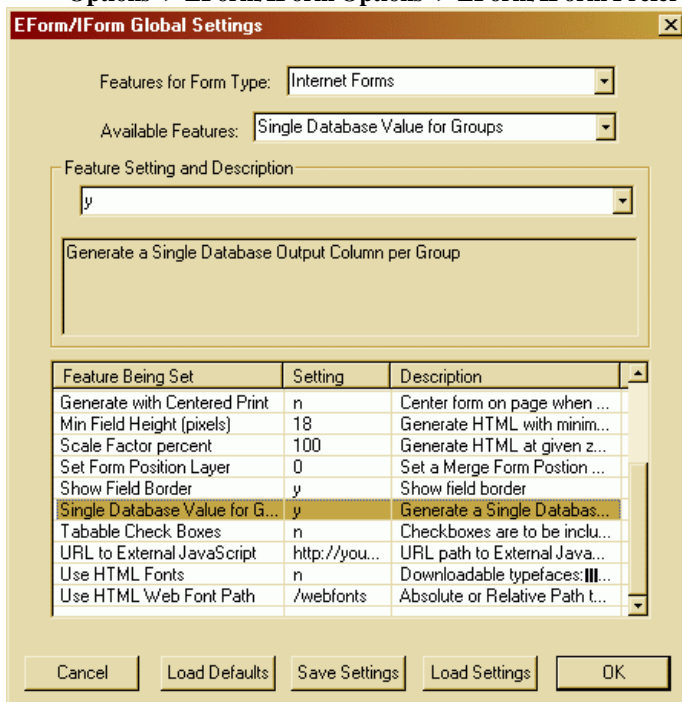
- LockLev (*)

■ **Group**

- Group (*)
- GroupValue

■ **PDF Files Generated using PDF Radio Buttons for CheckBox Groups**

- 16:34, 24 February 2009 (UTC)
- *Problem:* Some PDF files were required to be generated using the PDF Radio button field types because they could not be generated with JavaScript code which was how the current CheckBox groups are implemented.
- *Resolution:* To use this feature, you will need to set a global form preference to use single value CheckBox groups. This is set from **Options -> EForm/IForm Options -> EForm/IForm Preferences (ctrl+F)** then click **Edit Form Global Info** and select as below:



■ **For Each CheckBox, Specify Group Name and Value**

- This can be done from the Advanced Properties dialog either via the FieldID tab as below:

EForm Field Properties [X]

CustomInfo and Event Code		CheckBox Opts		
Field ID	DataBase	Security	Print	Dim/Steps
Field Name: <input type="text" value="Approve01"/>				
Field Type: <input type="text" value="CheckBox"/>				
Qualifiers: <ul style="list-style-type: none"> <input checked="" type="radio"/> None <input type="radio"/> Read Only <input type="radio"/> Required <input type="radio"/> Hidden 				
<input type="checkbox"/> Field is Disabled <input type="checkbox"/> Field does not Print <input type="checkbox"/> Sequential Enabled				
Group Name: <input type="text" value="OK01"/>				<input type="button" value="Add Mask"/>
Check Box Value: <input type="text" value="y"/>				
<input type="button" value="OK"/> <input type="button" value="Cancel"/> <input type="button" value="Apply"/> <input type="button" value="Help"/>				

- or via the Check Box Opts tab:

EForm Field Properties [X]

Field ID	DataBase	Security	Print	Dim/Steps
CustomInfo and Event Code		CheckBox Opts		
Group Name: <input type="text" value="OK01"/>				<input type="button" value="Add/Update Group"/>
Group Value: <input type="text" value="y"/>				
Reset Value: <input type="text"/>				
<input type="button" value="OK"/> <input type="button" value="Cancel"/> <input type="button" value="Apply"/> <input type="button" value="Help"/>				

- or via the Custom Info tab if you use the standard Field properties dialog:

```

DFPTexta06420.txt - Notepad
File Edit Format Help
BeginHelpInfo
Help is not available for this field.
EndHelpInfo

BeginInitvars
EndInitvars

BeginJscriptIncludes
EndJscriptIncludes

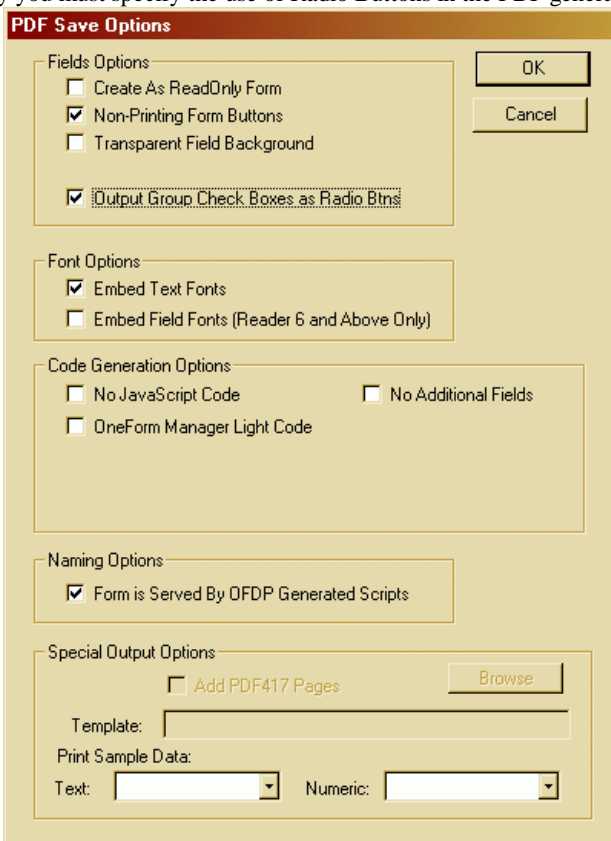
BeginCustomIncludes
EndCustomIncludes

BeginCommonCustomIncludes
EndCommonCustomIncludes

BeginGroupvalues
Defaultvalue=y
EndGroupvalues

```

- Finally you must specify the use of Radio Buttons in the PDF generated file via the check box indicated below:



- Generated PDF files now have code to synchronize display of combo boxes**

- 17:03, 24 February 2009 (UTC)
- Problem:** OneForm served forms, that had been previously filled in, did not always have the correct text displayed for combo boxes.
- Diagnosis:** This is a deep problem about how Acrobat renders the form, but it can be resolved by effectively tabbing to each of the fields on the form prior to having the user start filling.
- Resolution:** A function is now added to all PDF generated forms, *_InitSyncFields*, and this function is invoked during initialization of

the form. Some people have been adding a similarly named function so there should be no collision in function names.

Retrieved from "http://127.0.0.1/wiki/index.php?title=OFDP_Updates_since_4.7.2.5"

- This page was last modified 20:56:23, 2009-02-24.